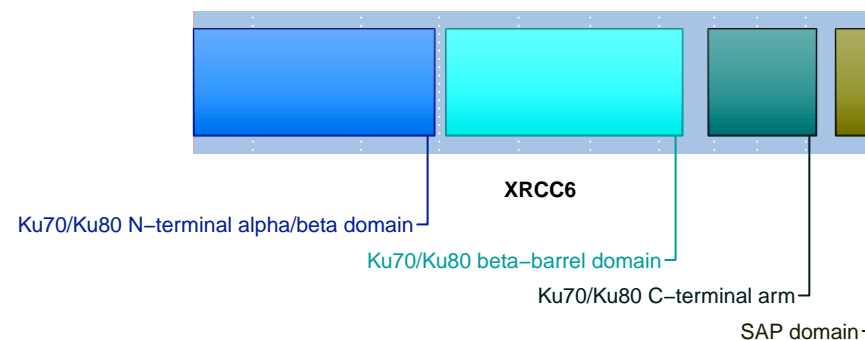


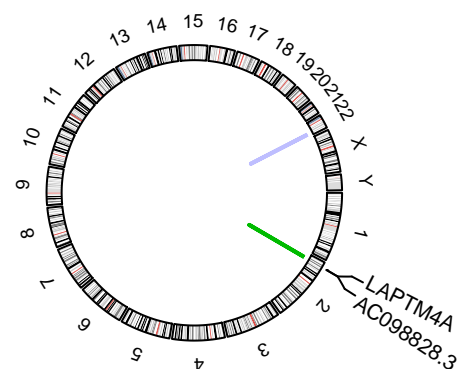
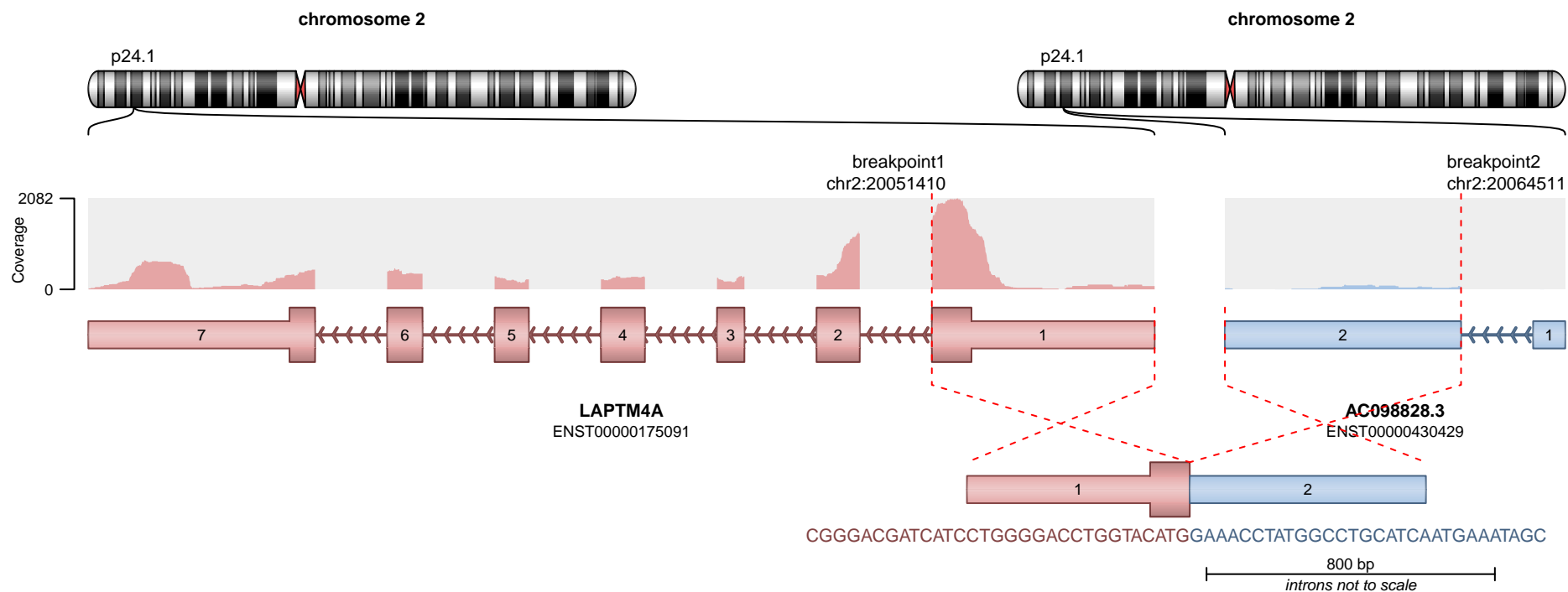
— translocation — deletion
— duplication — inversion

RETAINED PROTEIN DOMAINS reading frame unclear

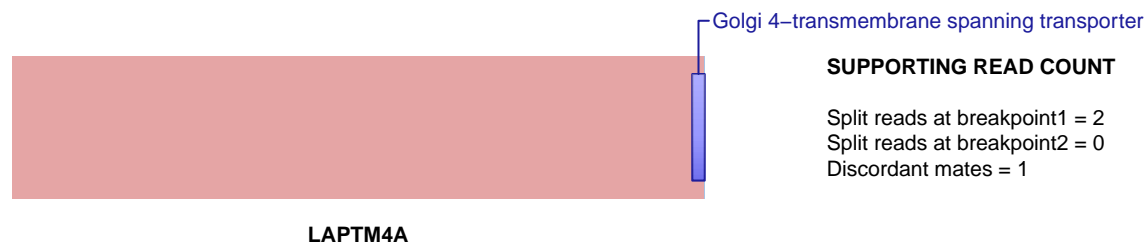


SUPPORTING READ COUNT

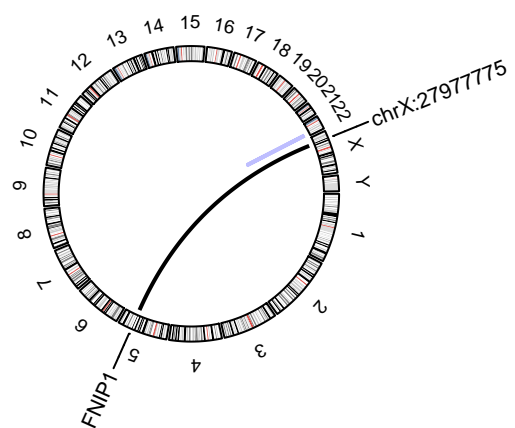
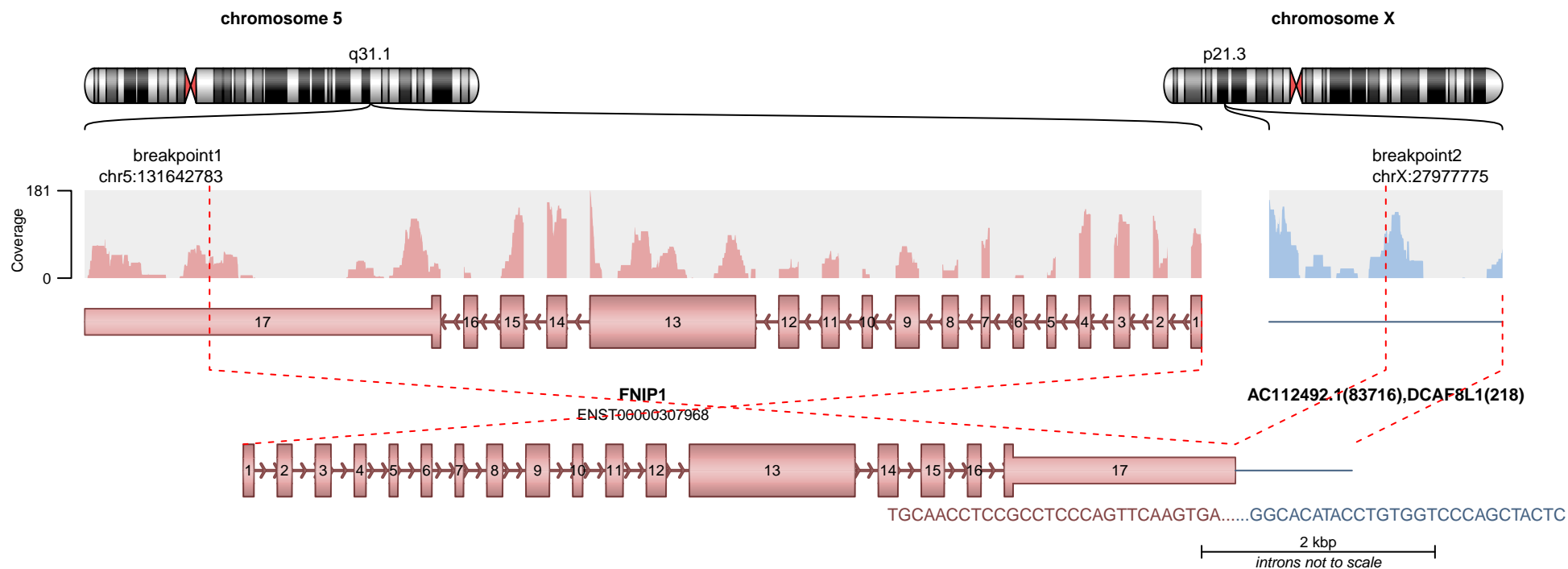
Split reads at breakpoint1 = 2
Split reads at breakpoint2 = 1
Discordant mates = 1



RETAINED PROTEIN DOMAINS
out-of-frame fusion

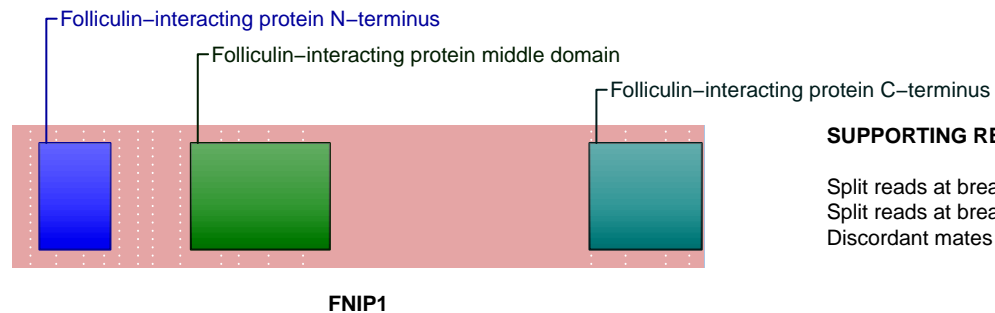


translocation deletion
duplication inversion



RETAINED PROTEIN DOMAINS

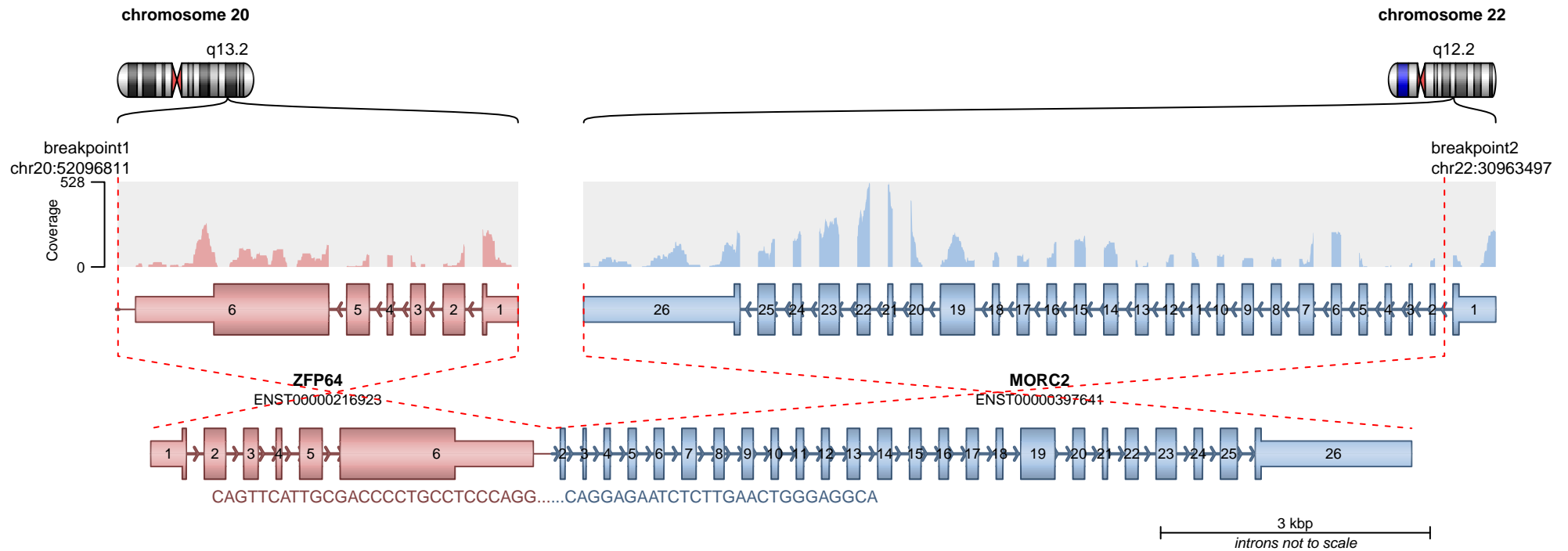
reading frame unclear



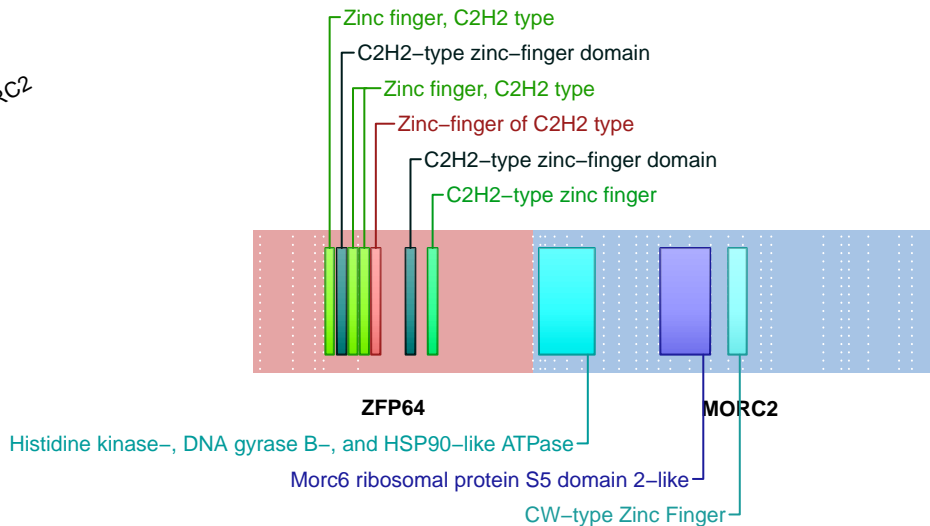
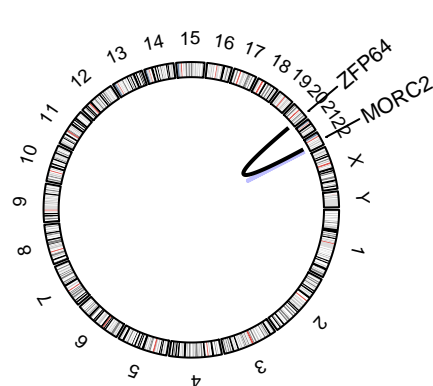
SUPPORTING READ COUNT

Split reads at breakpoint1 = 0
Split reads at breakpoint2 = 0
Discordant mates = 2

— translocation — deletion
— duplication — inversion



RETAINED PROTEIN DOMAINS
reading frame unclear



SUPPORTING READ COUNT

Split reads at breakpoint1 = 0
Split reads at breakpoint2 = 0
Discordant mates = 2

— translocation — deletion
— duplication — inversion